

The Spirit of Wood

March-April 2007
Newsletter

New England Woodcarvers, Inc.

NEWC Meeting Sunday April 1st, 2007

Middlesex Community College
Bldg. 8, park in Lot D, Bedford, MA

Welcome all to our April 1st meeting... no 'fool'ing!
We're looking forward to seeing our regulars as well as newcomers! Our April meeting includes something 'eggstra' special to carve from Chet Blay, a bunny carved from a wooden egg (pictured below). Or, Join Peter Webster for his polymer clay sculpting workshop (see pg 3). Also, carvers in Kris Gillis' workshop should plan to wrap up their "Fish With A Twist" project at this carving session. Kris will concentrate on finishing the carvings, setting the eyes, and painting the fish. Class

members are reminded to bring their paints and brushes. Kris has a new project in the works. See page 3 for more details. As usual, if you would like to lead a group, or just work on your individual project, the hall opens at 9 and we carve till noon. Please feel free to bring a tasty treat to share. Our meeting begins around noon and follows with our special April Guest speaker, Jim Sheehan, Celtic and Claddagh carver (see pg 2).

April Meeting's
Carving
project
by
Chet
Blay



Kangaroo Pattern

By
Rip Stangroom

See page 8



Pequossette Ponderings

Phyllis Miele4

Carving Tip - Eyes

Justin Gordon 5

St. Augustine Update 5

Helli Mayr Workshop Details7

Upcoming
NEWC Meetings 2007
Middlesex Community College
*New Carve-A-Long date

Executive Board Meetings

(Trustee's House, Bldg. #4)
Sat., May 19th, 9:00am

General Meeting

(Campus Center, Building # 8)
*Sunday, May 6th, 9:00am
Sunday, June 3rd, 9:00am

Spirit of Wood SHOW Planning Committee

(Trustee's House, Bldg. #4)
Saturday, May 5th, 9:00am



Carving by
student in
Paul Ward's
St. Augustine
carving
seminar.



April Guest Speaker
Jim Sheehan

President's Message OPPORTUNITY KNOCKS

The New England Woodcarvers calendar now has three new meeting dates – the first Sunday's of March, May, and November.

The additional days when combined with the traditional five carving and guest speaker days change our meeting frequency. The eight membership meetings are split into two carving blocks. In the fall there will be three months in a row of carving. And in late

winter thru spring members will experience five succeeding months of carving. Our goal is to expand the learning opportunities for all levels of carvers: More workshops. More project continuity. More skill building with the help of expert carvers. More time to enjoy the craft. And more opportunity to develop friendships with like-minded members.

Our first Cave-A-Long on March 11 was attended by 34 carvers. Kris Gillis, John Marino, and Brian Barber kicked-off the new carving session with

(... continued page 2)

(President's Message continued)
enthusiastic workshops that
went from 9:00 a.m.
to 1:00 p.m. Just make a little
more time for NEWC: We'll
make you feel right at home.

Roger Melanson

Last Chance!

Get your nomination form in
for this years Carver of the Year
Award.

Nomination deadline is April
1st, our next meeting date!



Carving by Floyd Truitt

Previous newsletter corrections...

Jan/Feb 2007: Back cover, desert should
have been spelled dessert.
Thank you Anna Araxy Yeshilian for your
hawk eyes!

Jan/Feb 2007: Thank You to Dan
Elkins. Dan served NEWC as the Rhode
Island Representative from 2001 - 2006
not 2001 - 2005

Future Meeting Guest Speakers to look forward to...

June 3, 2007 - Pete LeClair,
caricature carving. Pete will give
a presentation on making one of
his signature carvings. Pete has
taught his technique to carver
across the country. He is one of
our own, having started his career
of instructing here in New England.

October 7, 2007 - Claire Ruch -
songbirds and feather carving.
Claire has been in demand with
carving groups to instruct the
creating of songbirds and various
carvings that are enhanced by
the use of the burning tool for
detailing feathers etc.

Page 2

Our **Special Guest
Speaker** for April is Mr.
Jim Sheehan, the Claddagh
Carver par excellence,
specializing in sign & plaque
design; wood carvings; in
the round, deep relief & chip
carving; gilding in 23 k gold
leaf; pyrography
(woodburning) on flat &
carved wood, and parade
banners in acrylic paints.
Jim learned to carve from
his father and uncle in
Ireland. He carved his first
Claddagh mirror for his
wife, Terry, in 1982, and
since then has made rings
of various shapes & sizes
which have found homes
throughout the U.S., in
Ireland and in France.



February Guest Speaker
Jim Sheehan

Jim will display 12 to 15 Celtic
carvings which he will use to guide
through a timeline from the pre-
Christian Druids to the present plus some of his future plans. Jim's
favorite woods, tools & finishes will be built into his discussion.
Upon closing closing Jim will entertain questions.

Jim Sheehan. *Claddagh Carver*, 46 Jodi Drive, Wallingford, CT 06492.

MEETING DATE CHANGE

Many, but certainly not all members were notified of the new Sunday, March
4 meeting date that had to be changed to March 11. The change of dates
was caused by a scheduling conflict made by Middlesex Community College.
Our Membership Secretary, Yvette Holladay, sent out a notice to 112 e-mail
addresses and another 58 members received their notice by land mail. In
addition, the notice was posted on our Website.

DUE TO THE CHANGE IN DATES WE SINCERELY APOLOGIZE FOR ANY
INCONVENIENCE THIS MAY HAVE CAUSED.

An overwhelming number of members present at the February Membership
Meeting voted to add three more Carve-A-Long sessions. The activities at
these carving meetings will pertain only to general carving, workshops, show
& tell, coffee and tasty treats. These three sessions will run from 9:00 to 1:00
p.m.

The 2007 meeting schedule for the remaining 9 months will be:

April 1-----General Membership Meeting
May 6-----Carve-A-Long, 9:00 to 1:00 p.m.
June 3-----General Membership Meeting
October 7-----General Membership Meeting
November 4---Carve-A-Long, 9:00 to 1:00 p.m.
December 2---General Membership Meeting

With the new schedule there is no Membership Meeting the months of July,
August, and September. The 2008 schedule starts in January.
No Membership Meeting will be held that month.

MAY 6TH WORKSHOP.... CARVING AN OLD SANTA

Kris Gillis will be starting a new workshop at the May 6th Carve-A-Long. The new project she has selected is designing and carving an Old World Santa, bringing an exciting new dimension to creating your own style of Santa. Kris will take the carver step-by-step through the process of design, creating a pattern, roughing out the blank, and using your own techniques and style to bring the carving to the finished stage. This workshop is not a difficult challenge, and can be accomplished by most carvers. The pictures with this article provide a glimpse of what is possible for the workshop participant to achieve. There are endless variations to choose from, depending on the carver's ideas that will spur him or her on. The tools needed to get started on this project are the #9/20 deep gouge, the #12/8 V-tool, a mallet, and a vise. Kris would like all carvers interested in her workshop to let her know by e-mail, phone, or at the April 1st Membership Meeting so she can supply enough wood for everyone. If you have your own piece of wood to use, you are welcome to bring it in. Her e-mail address is Gillis_Kris@yahoo.com and her phone number is 978-948-7186.



APRIL WORKSHOP POLYMER CLAY SCULPTING BY: PETER WEBSTER

A WONDERFUL
FORM OF
ARTISTIC
EXPRESSION



Peter Webster

Woodcarvers, join Peter's workshop to sharpen your modeling skills! An important skill for all.



Above, examples of Peter Webster's clay creations

New England Woodcarvers New Members

We are pleased to welcome the following new members who have joined NEWC since our last newsletter:

From Massachusetts, we welcome Albert Ericsson and James Jaillet from Gardner, James Denker from Scituate, George Pettinelli from Billerica, Alice Mullen from Lunenburg and Leo & Mary DePolo from Quincy. Additionally, we welcome Gay Gawron from Nashua, New Hampshire.

A warm WELCOME one and all to NEWC!

NEW ENGLAND WOODCARVERS

OUR MISSION
EDUCATING, PROMOTING AND ADVANCING WOODCARVING,
WOOD SCULPTURE, AND WHITTILING AS AN ART FORM

PRESENTS

Spirit of Wood Show

SUNDAY, OCTOBER 21, 2007

9:00 am to 4:00 pm

MIDDLESEX COMMUNITY COLLEGE
SPRINGS ROAD, BEDFORD, MA
BUILDING #8 - CAMPUS CENTER

ADMISSION \$4

CHILDREN UNDER 18 FREE

- * CARVING COMPETITION
- * FLOATING WILDFOWL COMPETITION
- * FEATURE ARTIST
- * LIVE BIRDS OF PREY
- * CARVING WORKSHOP FOR YOUTH
- * EXHIBITION OF WOOD ART
- * ARTISTS DEMONSTRATIONS
- * SELLING ARTISTS
- * TOOL-SUPPLY VENDORS
- * DRAWINGS
- * FOOD AND BEVERAGE

FEATURED ARTIST
HELLI MAYR
MUTTERS, AUSTRIA



Helli Mayr

FEATURING: WOODCARVING, WOOD SCULPTURING,
WOODTURNING, WHITTILING, AND SCROLLING.

LEVELS OF COMPETITION INCLUDE:

YOUTH, NOVICE, INTERMEDIATE, OPEN

NEWC MEMBERS-WOODTURNERS-SCROLLERS

\$10.00 FIRST ENTRY, \$5.00 EACH ADDITIONAL ENTRY.

NO FEE AFTER FOUR ENTRIES.

NON-MEMBERS

\$15.00 FIRST ENTRY, \$5.00 EACH ADDITIONAL ENTRY

\$5.00 OFF FIRST ENTRY APPLIED TO A NEWC MEMBERSHIP

YOUTH ENTRIES ARE FREE

REGISTRATION: SATURDAY, OCTOBER 20TH FROM 4-8 pm

SUNDAY, OCTOBER 21 FROM 7-9 am

FOR RULES AND SHOW INFORMATION CONTACT:

ROGER R. MELANSON

27 SHANNON WAY, LANCASTER, MA 01523

(978) 368-5922, rolmel@comcast.net

VISIT www.NEWC.org
FOR MORE SHOW INFO

Pequossette Ponderings

by Phyllis Miele, Watertown, MA

Willie Nelson's rendering of the song, *On the Road Again*, echoes in my head. My pen taps to the beat and dots the blank page . . .

*As Sprinklings of green appear on the landscape.,, Windows open wide once again...
A breath of fresh spring air in New England is an awakening of spirit...
The energizer needed to begin anew... a new day...a new thought.*



Sharpen Pencils to a Finer Point

Comes a time on the woodcarving road when an original idea challenges the imagination. Experience has taught us to capture the image quickly before it's lost from mind's eye. It pays to be ready to meet the challenge 'hands-on.' Your well-guided pencil is unique in that it can transfer your original design to paper. The journey from mind to hand is a good stretch...for some it comes easily while others find the exercise a work-in-progress. Acquiring free-hand drawing skills is a freedom that can only enhance future carving plans, thus creating finer original works of art. One key to success is being ready.

Taking a drawing course is one way to go. There are other options if a class does not fit your time frame. Today is a day of waiting. We wait in traffic.. .at the doctor's office.. .the general store or the office of the Registry. A moment or two used for homework. A Number 5B pencil and drawing pad of paper prove invaluable when kept handy and used daily. Heard of a drawing teacher who expected 100 mini-drawings for homework ready for each class.. .on paper the size of a postcard. Objects suggested were simple things found around the house - light switch, doorknob, etc. The homework itself was a lesson in training the eye to see. Other teachers prefer large sheet drawing.

In relief carving perspective drawing exercises are a good value. Railroad tracks come to mind. Everywhere in the home are shapes to practice.. .cereal boxes, jars, bowls, cups.. .in the garden soon it could be leaves, flowers or veggies. Meanwhile do visit the produce department of your favorite market. Don't forget to draw your Butternut Squash before dinner.

Phyllis Miele



A sincere

Thank You

goes out to
Floyd Truitt
for his generosity
in donating one of
his outstanding relief
carvings to the
Spirit of Wood Show
Raffle.

Left, Floyd Truitt with
his donated relief carving.

Acct	Balance Sheet As 2/28/2007	Balance
Assets		
Cash & Bank Accounts		
NEWC Checking		3,577.87
NEWC Savings		4,825.63
Total Cash & Bank Accounts		8,403.50
Other Assets		
CD1169679866		10,563.22
CD1169929099		5,281.61
CD1170349896		4,069.03
Total Other Assets		19,913.86
TOTAL ASSETS		28,317.36
LIABILITIES & EQUITY		
LIABILITIES		0.00
EQUITY		28,317.36
TOTAL LIABILITIES & EQUITY		28,317.36

Respectfully submitted by
Leo Lambert
Treasurer

**THESE BUSINESSES
SUPPORT NEWC**
with their
membership
and other
club activities.
**PLEASE
SUPPORT THEM**

**GREGORY D.
DORRANCE CO**
1063 Oak Hill Avenue
Attleboro, MA 02703
(508) 222-6255
gregdorrance.com

CAPE FORGE
120 Clark Mills Road
Dayton, ME 04005
1-888-310-3343
karyn@capeforge.com

CARVERS PLUS
141 West Street
Leominster, MA 01453
(978) 537-1805
Carversplus@aol.com

**CT VALLEY
WOODCARVING**
309 Woodbridge Road
Coventry, CT 06238
(860) 742-3253
ctvalleywvc@yahoo.com

**IVAN WHILLOCK
STUDIO**
122 NE First Avenue
Faribault, MN 55021
1-800-882-9379
carve@whillock.com

**MDI WOODCARVERS
SUPPLY**
PO Box 4
Pittsfield, ME 04967
1-800-866-5728
mdiwoodcarvers.com

3-B Enterprises
124 Pinnacle Road
Lyme, NH 03768
(603) 795-9329
tuckaway@sover.net

Carving Tip of the Day: Eyes

from Carver/Sculptor
Justin Gordon

When most beginner carvers make eyes they carve them flat and lacking depth. There are three important rules when carving eyes. First, make sure you carve the corners of the eye nice and deep so the eyeball looks round, not flat. This is done by simply carving the location of the eye first then taking the tip of the knife and cutting out a deep triangle from the corners of the eye thus rounding the eye into the corners of the eye. Then carve the eyelids to follow the ball shape. Second, make sure that the shape of the eye lids taper back to the side of the face from the side view. Each human face you see looks like it does because the side view tells you how deep the front view details are. You should be able to see the eyeball from the side view after the outside of the eyelid is tapered back. Finally, when you carve out or paint on the iris of the eye, remember two things: 1) eyes that look down look stern and eyes that look up look happier, and, 2) the iris takes up about 2/3's of the eye (unless you want the beady eye thing) with the white or silver light reflection spot at 2 or 10 o'clock. And do make sure that both eyes are the same size unless you mean to do otherwise. Here's looking at you.....



This face sculpted in sand illustrates the result of carving the depths of the eye corners and the tapering back of the eye lid from the side view.

Justin is not only a master wood carver, but also creates sand sculptures seen at yearly competitions, one of which a detail is pictured above.

St. Augustine Workshop

Update....



As mentioned in the last newsletter, a carving workshop was initiated on a bi-weekly basis for youngsters at St. Augustine School in Andover, MA. Paul Ward volunteered for this project that started in January and ended in February. After the first session which was to make a Gee Haw Whimmy Diddle, The second session was about doing a flat relief carving of a bird. The third class was on making a small stick-up shore bird and on the last session the kids all made a small cross to hang around the neck.

All projects were done using hand made tools and abrasive sticks, burnishing tool and sandpaper. Here are some of the projects:

- The flat relief was done on half inch thick pine, 4" X 6" stained with shoe polish and hanger on the back.
- The stick-up (pictured on cover) is basswood. Small dowels and hardwood base were used to complete it. Shoe polish stain finished it.
- Two crosses were done by each. One in walnut and one in African obeche. All natural, no stain or varnish was used. Burnishing for the finish with a string for hanging.



M. Paul Ward

Last Meeting... NEWC's 1st Carve-A-Long Meeting - March 11, 2007

There was a pretty good turnout -- 34 attendees when I arrived (including Roger and myself). I'm told that a few people had come and gone by then. There was no speaker, raffle, display table, or club meeting, just folks carving and socializing over coffee and donuts.

- . Chris Gillis led a workshop on Part 2 of a project to carve a fish.
- . John Marino led a workshop on carving a snowman
- . Brian Barber -- a chain with a swivel, a chain with a ball in a cage, a spoon
- . Dave Monroe -- a carousel horse decorated with an Elvis Presley theme. There was an Elvis face, blue suede shoes, a guitar, and musical notes.
- . Hugh Blake -- a Painted Bunting
- . Jim Clemeno -- a dragon from the book "Carving Fantasy and Legendary Figures in Wood"
- . Jim Denker -- wooden "bowls" carved from chunks of wood using his self-designed "Viper Tooth" carving shave.

There were also some jack-o-lantern pumpkins (with lights inside them) for sale.

Notes by NEWC Secretary, Karen Seo



John Marino's Snowman carving project.



John Marino assisting Alberta Genetti.



George Pettinelli working on gouge project.

Next Meeting: Don't forget to bring your items to donate to the drawing. Support NEWC and make a drawing winner appreciate what you no longer need.
Thank you to all who generously donated in the past!

Letters...

The speaker, Mike McCarthy, was an absolute gem! His presentation was direct to the subject, filled with information, and provided the listener with an incite to his carving methods and sources that few speakers bring. He said that if he were invited again, he would bring a workbench, and go through the entire carving process. I'm certain everyone who heard his presentation would be interested in an in-depth demonstration such as that. Aside from that, thank you for providing us with such a good speaker who, in turn, provided us with an informative and entertaining afternoon.



Nick Maselli

NEWC Regular Meeting - Feb 4th, 2007

A big thanks to our February Guest speaker, Mike McCarthy.

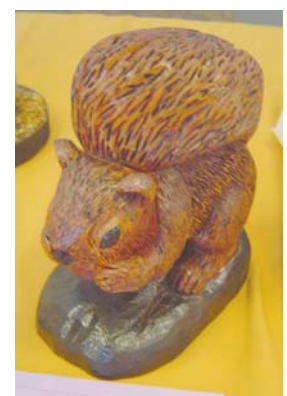
Mike showed first hand techniques in carving, forming legs and beaks, painting and finishing details on his popular shore birds. A first-rate demonstration!



Just a couple of the many February **Show & Tell** pieces..



'Ye Auld Homestead' relief carving by Joan S. Adams



Woodland creature by Kathy Savage

INTERNATIONALLY KNOWN AUSTRIAN SCULPTOR



Helli Mayr

HELLI MAYR

WILL TEACH A THREE DAY
WOOD SCULPTURING WORKSHOP

OCTOBER 17, 18, 19 – 2007

MIDDLESEX COMMUNITY COLLEGE
FACILITIES MANAGEMENT BUILDING #11
BEDFORD, MASSACHUSETTS

CLASS SIZE LIMITED TO 14 PARTICIPANTS
WORKSHOP RUNS FROM 9:00 A.M. TO 5:00 P.M.
REGISTRATION WILL BE ON A FIRST – RECEIVED BASIS
SOME SKILL AND KNOWLEDGE ON USE OF SKEW,
GOUGE AND CHISEL HELPFUL. NO Mallet IS USED

ONLY \$240.00 !!!

**14
Participants
Only! Secure
your spot
while there's
still room
available!**

FEE COVERS WOOD MATERIAL, INSTRUCTION, LUNCH, BEVERAGES AND FOOD
ITEMS THE ENTIRE WORKSHOP TIME PARTICIPANTS CAN CHOOSE TO CARVE A
HERALDIC LION OR HUMAN HAND

ABOUT THE INSTRUCTOR

BORN IN INNSBRUCK, AUSTRIA, HELLI MAYR SPENT 7 YEARS IN
ART SCHOOL TO BECOME A MASTER CARVER OF WOOD AND STONE.

AT ONE TIME IN HIS CAREER HE RESTORED WOOD AND STONE CARVINGS IN CHURCHES AND CASTLES. LATER
ON HE BECAME AN INDEPENDENT WOODCARVER. HE WROTE A BOOK ON CARVING NATIVITY SCULPTURES AND
HE IS IN GREAT DEMAND FOR COMMISSION WORK. HELLI IS BEST KNOWN FOR HIS LIFE-SIZE RELIGIOUS
SCULPTURES IN AUSTRIA AND GERMANY. MORE RECENTLY HIS CARVING STYLE HAS CHANGED SOMEWHAT...HE
LIKES TO DO THINGS THAT AFFECT OUR TIMES, PLUS HUMOR IN THE OLD TECHNIQUE. FOR 8 YEARS NOW HE
HAS BEEN TRAVELLING TO THE UNITED STATES TO TEACH HIS DISTINCTIVE STYLE OF CARVING. HELLI SPEAKS
ENGLISH AND HIS WORK HAS APPEARED IN THE MAGAZINE 'CHIP CHAPS'. THIS EXCEPTIONAL TALENTED CARVER
LIVES IN THE VILLAGE OF MUTTERS IN THE STUBAI VALLEY JUST ABOVE THE CITY OF INNSBRUCK IN AUSTRIA'S
TYROL.

SEE REGISTRATION FORM FOR MORE DETAILS
ADDITIONAL FORMS AVAILABLE FROM THE NEWC PRESIDENT



Helli Mayr carvings



Proposed Heraldic Lion Project



Proposed carved Hand Project

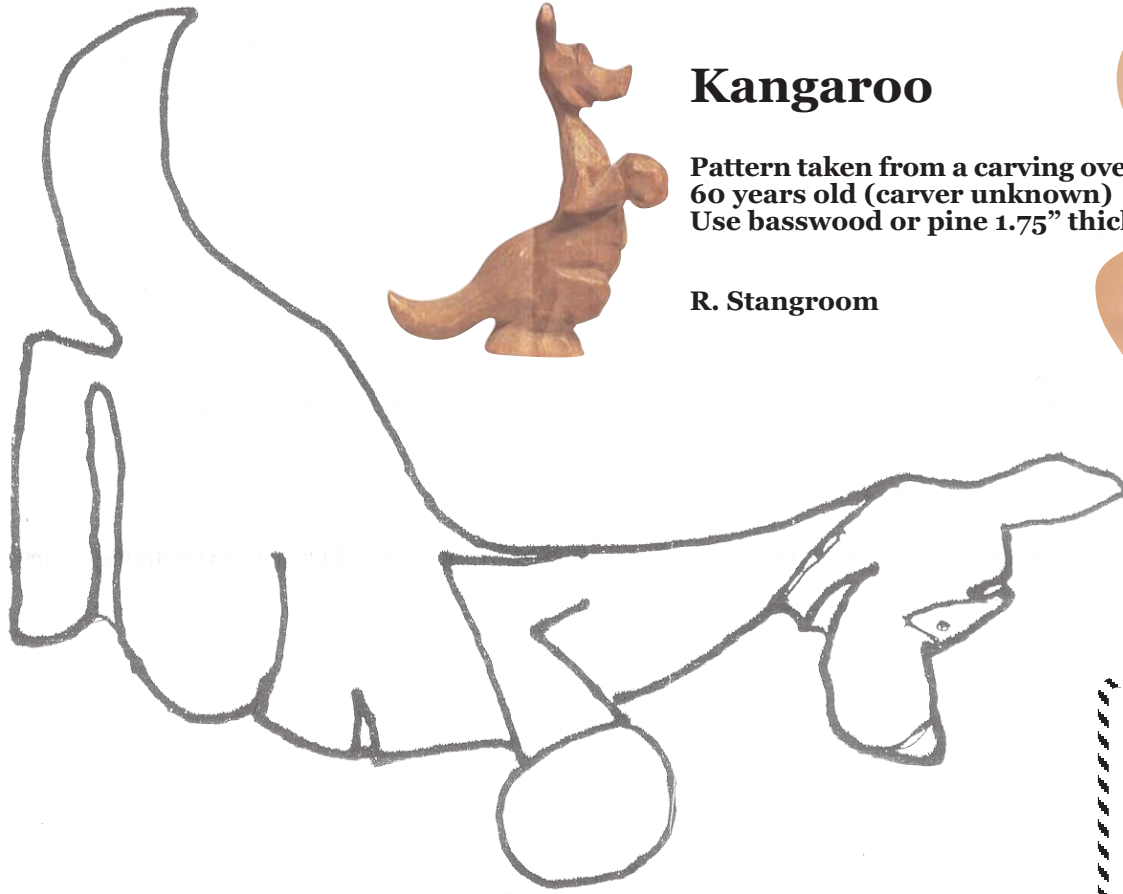


THIS PROGRAM IS SPONSORED BY THE NEW ENGLAND WOODCARVERS ASSOCIATION
IN CONJUNCTION WITH THE 'SPIRIT OF WOOD SHOW' ON OCTOBER 21, 2007

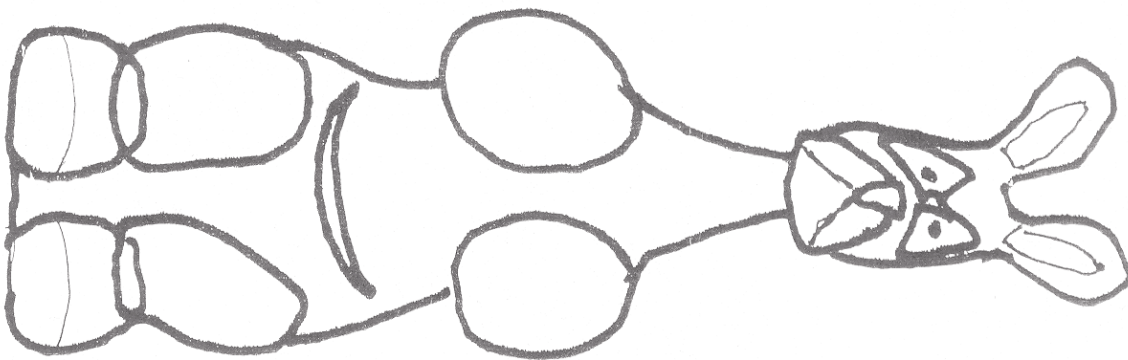
Kangaroo

Pattern taken from a carving over 60 years old (carver unknown)
Use basswood or pine 1.75" thick

R. Stangroom



A note of
THANKS
to **Rip Stangroom**
for his generous
cut-outs donation
for the Jan/Feb.
meeting raffle table.



NEWC Catalog



A quality blue **Hat**, adjustable, with embroidered club logo and "New England Woodcarvers"
\$11.95



Quality China **Coffee Mug** with the NEWC logo on two sides.
\$5.00



NEW! The NEWC **Window Decal**, 3" diameter, blue lettering on white background.
\$1.25



The colorful NEWC **Patch** suitable for hat, jacket or apron.
\$5.00

These items are available at our regular meetings, or by mail from:

NEWC Merchandise Coordinator
193 Beech St
Fitchburg, MA 01420-4118

Mail Orders

Add shipping and handling:
 Cap, add \$2.50
 Mug, add \$7.00
 Patch or Decal SASE

Member Bob Alekshun, owner/operator
Superior Engraving

Engraved Pin-on NEWC Name Badges \$5.00 each.

(\$2.50 of this will be donated back to NEWC) **Price includes mailing back to you!** Two styles are available, both with the NEWC logo, your name and town/city. One style has the name "New England Woodcarvers" spelled out; the other does not. A smaller pin with just the logo is also available for \$3.50. See the samples at the meetings. Order with payment to:

Bob Alekshun
77 Appleton Rd.
Auburn, MA 01501



Checks payable to:
New England Woodcarvers

Send to (with SASE):
Membership Secretary
886 Salem Rd.
Dracut, MA 01826-1659

NEWC By-Laws are also available from the Membership Secretary. Inquiries can be made to the address above.

For Sale...

Stationary Power Tools for Sale

Grizzly 42inch comb belt sander and 8" disc sander w/ Vz hp motor. W/owners manual \$ 50.00

Delta/Rockwell old style Scroll Saw w/motor and stand. Can be used as a filer-sander as well. 1940s vintage. \$50.00

Delta/Rockwell 10inch Band Saw w/motor, lamp, stand and owners manual.

1940s vintage. \$75.00

Sensitive Bench Drill Press. W/Motor \$50.00 1947

Homebuilt 12" Wood Lathe and Motor. 34" between Centers. Includes Accessories \$50.00 1948

12" Wood Lathe, 5 speeds w/accessories and owners manual \$75.00. ALL PRICES FIRM or Take all for \$300.00

Floyd L Truitt e-mail: floydcarves@msn.com

Wood for Sale

Moulton Farms Hardwood Lumber and Carving Wood ,123 Moulton Road,Pittston,Maine 04345 sells Native Maine Basswood and Butternut to carvers. Basswood is \$2 per board foot and Butternut is \$2.50 per board foot. Prices do not include shipping costs. Customers may visit the farm by making an appointment or contact us by e-mail ,writing or calling. When you contact us please provide the dimensions of the wood you are looking for and provide your mailing address and phone number so postage can be figured. I will get back to you on the total cost of the wood and postage.

Bill Moulton

Telephone: 207-582-2515

e-mail: wgmoulton@earthlink.net

Rubber Cane Tips are available in bulk from the Waxman Co of Ohio.

The tips are available in units of 96 per size in bulk. The case quantities are 288 , however they are agreeable to ship Min 96 per size. Mention: woodcarvers eagle cane program on your order. The currant price is [subject to change]

1" Tip at 15 cents

3/4" at 11 cents

5/8 at 11 cents

other sizes are available, plus UPS shipping costs.

Contact: Sue Nelson Cutomer Service

1 800 531 3342 ext 3641

nelsons@waxmanpcpg.com

24455 Aurora Rd, Bedford Heights, OH 44146

you must call Sue to confirm order and price and then mail a check to her attention for the order to be shipped. They do not normally deal in small orders but due to the Amputee Program she will help out the clubs and individules who are interested. Normal Regular orders must be in full case quantities of 288 per size so this is a very special deal for Woodcarvers .

John Freels, SMWC Knoxville, Tn

New England Woodcarvers Membership Annual dues are \$15

Penna. Delaware Valley Wood Carvers Show & Competition March 31 & April 1

Penn State, Abington Campus Gym, Abington, Pennsylvania.
www.delvalwoodcarvers.com





Mystic Carvers News, CT

The Mystic Carvers Club will sponsor the 2007 CarveAlong East, May 25 – 28 at the Alton B. Jones Campgrounds of the University of Rhode Island in West Greenwich, RI. Instructors are Gary Falin, Randy Landen and Peter Ortel.

For more information contact Ed Ertel evenings at 860-875-6187, or e-mail at erteled@yahoo.com. You can write to Ed at 65 Loehr Road, Tolland, CT 06084-3211. You can also contact the Mystic Carvers Club President, George Elliott, at elliottgeorge@sbcglobal.net or 860-4648191.



Connecticut Valley Woodcarvers July 2007

July 7th - The 26th Annual Woodcarver's Day, Mystic, CT (Olde Mistick Village, Apple Orchard) Sat. 9:30am-5pm. Rain date July 8th. Free admission.

Contact Warren Blessing for more information
860-742-3253.
warren@ctvalleywc.com
www.ctvalleywc.com



Maine Woodcarvers Association

Dave Brown, President, 207-873-3370,
32 Burleigh Street, Waterville, ME 04901

Chapters within Maine Woodcarvers Association:

Capitol Carvers

Dale Ackerson, 207-622-5347,
Meet at; Legion Park Rd.,
Windsor, ME 04363
Every Thursday, 6:00-7:00PM

Carver St. Carvers

Bill Gordon, 207-873-1675,
Meet at; 1 Carver Street,
Waterville, ME 04901
Every Tuesday, 1:00-3:00PM

Central Maine Carvers

Jim Violette, 207-873-4155,
Meet at; 32 Burleigh St.,
Waterville, ME 04901
1st Wednesday ea. mo. 6-8PM

Coastal Carvers

Carol Durgin, 207-442-7005,
Meet at; D & L Printers, Rt. 1,
Newcastle, ME 04553
4th Saturday ea. mo. 1:00PM

South Coast Carvers

Robert Philippe, 207-490-1008,
11 Deborah Avenue,
Sanford, ME 04073
Meet at; Crossings at Fox Run Mall,
Goslin Rd., Newington, NH
4th Tuesday ea. Mo. 7-8:30PM

Streaked Mountain Carvers

Bob Perry, 207-388-2472,
Meet at; 80 Gammon Rd.,
Sumner, ME 04292
2nd Saturday ea. Mo. 1:00PM

You are cordially invited to:

The 2007 Woodburning Celebration

Dates: August 3, 4, & 5

Show times: Friday - 1pm - 6pm Saturday - 9am - 6pm Sunday - 10am - 2 pm

Registration and competition entry times:

Thur. Aug. 2 nd. - 3:00 p.m. - 7:00 p.m.

Friday Aug. 3 rd. - 7:00 a.m - 11:00 a.m.

Seminars will be held by the following pyrographers:

These demonstrations will be reasonably priced.

Zengguo Qian from China --the top Chinese International artist-doing human portrait and other techniques

Orchid Davis-demonstrations on Gourds and wood, doing piercing techniques, drawing, burning, coloring and putting shine in eyes. She will also be doing a demonstration leather burning.

Don Worden -demonstrate using solid tip techniques on architectural scenes and animals.

He will be doing at least one 4 hour seminar.

Cheryl Dow -doing an ongoing demonstration (free of charge) on any topic asked about and also helping folks with any projects they have brought.

Wood, Leather, Acrylic mirrors, Paper and Tagua nut slices.

Other teachers for seminars will be added as they are acquired.

Participants are encouraged to demonstrate at their tables also.

All are encouraged to bring 4" x 4"x 1/8" thick woodburned quilt blocks to place in the quilts being assembled there for sale for the benefit of the Sawmill Center.

For more information check out this website:
www.cherylldow.com

Lodging and other info is at the bottom of the application page. or call the Sawmill at: 1-814-927-6655 or write them at Cook Forest Sawmill - PO Box 180 - Cooksburg, PA - 16217 or email:CDDOW@aol.com or call at: 1-248-363-6454



MONSON WOODWACKERS

The Monson woodwackers had a demonstration of chip carving techniques at our February meeting. The demonstration was put on by Robert Smith from the Mystic carvers club. Bob Instructed our members on the basics of chip carving. Bob Made it a very interesting two hours. After an hour or so of working on the basics Bob had us making our own patterns and finishing a delicate rosette pattern. Everyone had an enjoyable evening and we all learned a different form of carving. He made for a very interesting meeting.

The April show For the Monson Carvers will be Saturday, April 14, 2007 at the Monson Memorial Town Hall, Rte. 32, Main Street, Monson, MA.

10 a.m. to 5 p.m.

Entries from noon to 5 p.m. Friday or 7 a.m. to 9 a.m. Saturday. Prizes for best in each class of Youth – Novice – Intermediate and Open

For more information call Bob Anderson 1-413 -247-5071

26th Annual State of Maine Sportsman's Show Carving Contest March 31, April 1 and 2 - Augusta Civic Center

The Sportsman's Show sponsors a wildlife carving display that is open to all carvers. The three day wildlife art, photography and carving show is the largest in the state. Carvings will be judged, ribbons and trophies will be displayed with the winning works, then work will be displayed to thousands of sportsman's show attendees. Contact information will be displayed for all works promoting purchase if the artist chooses. For rules or additional information, please contact:

Selene Dumaine

Show Secretary

dumaine.smss@adelphia.net

In Memoriam

Joseph R. Forest, 82, of Westport, MA, died January 11, 2007. He held NEWC # 2484 and was an avid carver. He attended many wood carving shows with his daughter, Diane. He continued to take wood carving lessons from Sr. Gertrude Gaudette in Fall River, MA until he became ill in November, 2006. He is survived by his four children: Diane, Patrice, Dennis, and Suzanne Forest.

*Our warmest regards and
renewed sympathy to their
family and friends.*

*If you should come across news of a NEWC member who has passed on,
kindly send notice to the NEWC Membership Secretary.*

Thank You

News & Notes

*If you have a local carving story of interest, or photos you would like to share, please forward them to M. Paul Ward
mpaulward@comcast.net
or Yvette Holladay yvette@newc.org
Or send your submission to:
New England Woodcarvers Newsletter
886 Salem Rd. Dracut, MA 01826*

11th Annual Woodcarvers Retreat in New England

Oct 5th- 8th 2007

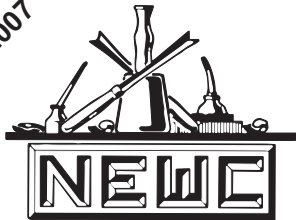
Instructors in 2007 and Specific classes/activities offered on Saturday and Sunday are:

- 1) Rip Stangroom – (New England Wood Carvers)- This year's subject is a Caricature Policeman.
- 2) Claire Ruch – (Staten Island Woodcarvers) – Claire is back again this year and will instruct students in carving a Tufted Titmouse.
- 3) Pete LeClair – (Member of Caricature Carvers of America) –Carving a Caricature Bust Figure.
- 4) Mary- Ann Jack- Bleach- Relief Carving (Award winning Canadian Carver) Will do a Relief Carving of Peggy's Cove lighthouse, Nova Scotia.
- 5) Jack Miller – (Hanover, PA) –Carving a Great Blue Heron about 9-10 inches.
- 6) Ernie Hill- (Killingworth, CT)- Eagle Carving Ernie will instruct students carving a John Bellamy wall hanging Eagle (about 14 inches in length).
- 7) Chris Howard - (Gatlinburg, TN) – Realistic Face Carving from a rough out of your choice. Chris will have a good selection of rough outs, mostly Indian and Western style figure busts will be available to choose from.
- 8) Floyd Rhadigan- (Saline, MI) Caricature Figures- Floyd is a 2007 inductee to the Caricature Carvers of America,

The objective of the Retreat is to provide a place where wood carvers from all over can gather to carve, socialize and improve their skills with room and board provided at affordable rates, a total of \$190 for the weekend. The fact that you will witness first hand the "changing of the colors" of the New England woodlands is an added bonus. All instructors and organizing staff are volunteering their time for this event. All blanks needed for the classes can be purchased directly from the instructor at the start of the class.

For further questions or to request a complete information and application form, call Ray Johnson at 860- 848-8194, (wcvray@ct.metrocast.net) or write to his attention Mystic Carvers Club, PO Box 71, Mystic, CT 06355 or e-mail Jim O'Dea (jeodea@aol.com)

Mar./April 2007



New England Woodcarvers, Inc.
P.O. Box 561
Lexington, MA 02420-0005

www.NEWC.org

Next meeting....
April 1st, MCC Bedford, MA



Officers of NEWC Fiscal year 2006-2007

President: Roger Melanson

27 Shannon Way, Lancaster, MA 01523
Phone- 978-368-5923
email - rolmel@comcast.net

Vice President: M. Paul Ward

4 Freeman Rd., Chelmsford, MA 01824
Phone- 978-256-6391
email - mpaulward@comcast.net

Secretary: Karen Seo

One Watermill Place, Unit 209
Arlington, MA 02476-4142
Phone- 781-643-3769
email - kseo@bbn.com

Treasurer: Leo Lambert

3 Elmwood Terrace, Woburn, MA 01801
Phone- 781-935-4428
email - stoutlamb@comcast.net

Membership Secretary: Yvette Holladay

886 Salem Rd., Dracut, MA 01826
Phone- 978-808-3370
yvette@newc.org

Director at Large: Maria LaGoy

141 West St., Leominster, MA
Phone- 978-537-1805
email - carversplus@aol.com

Past President: Joseph Olson

26 Howard St., Randolph, MA 02368
Phone- 781-963-8632
email - fishingswede@aol.com

Publicity, Programs, Workshops

M. Paul Ward (978) 256-6391
email - Mpaulward@comcast.net

The Annual Spirit of Wood Show

Roger Melanson (978) 368-5923
email - Rolmel@comcast.net

Hospitality – Maria LaGoy

(978) 537-1805
email - Carversplus@aol.com

Raffle

Paul Durant
9 Roy St.
Rochester, NH 03867
(603) 332-3247
email - pgdurant@verizon.net

Library and Website – Bob Sisson

(781) 828-0915 email - sissonrd@verizon.net

Merchandise Coordinator

Bob Landry
193 Beech St
Fitchburg, MA 01420-4118

Area Representatives

Western Mass - Robert Anderson (413) 247-5071
Connecticut - Warren Blessing (860) 742-3253
New Hampshire - Lenny Chaisson (603) 224-2607
Cape and Islands - Elsie Jacobson (508) 477-9333
Vermont - Floyd Truitt (978) 597-2868
Mid New York - Paul Stuewer (845) 242-3231
Rhode Island, Ken St. Vincent, 401-397-7252

The mission of the New England Woodcarvers is to educate and promote woodcarving, wood sculpturing, and whittling as an art form to all its members and to the greater community.



April 1st MEMBERSHIP MEETING

There will not be an organized buffet at the March/April meeting. Members are welcome to bring a dessert or finger food to share with the group.

Thank you to those who make the effort to bring something to share!

And as usual... we'll bring the coffee!

Newsletter:

Editor: **M. Paul Ward**

Assistant Coordinators: **Roger Melanson**

Contributors: **Roger Melanson, M. Paul Ward,**

Phyllis Miele, Rip Stangroom,

Leo Lambert, Justin Gordon,

Warren Blessing, Maria LaGoy,

Kris Gillis, Yvette Holladay

Design & Layout: **Yvette Holladay**

Photographers: **Bob Schmeichel,**

M. Paul Ward, Yvette Holladay